

DIGITAL SATELLITE METER

THE PROFESSIONAL EQUIPMENT

DIGITAL
SATELLITE
METER

THE PROFESSIONAL EQUIPMENT
USER'S MANUAL

CONTENTS

Product Description

1. Guide	2
1.1 Face Panel & Button	3
1.2 Power On/Off	4
1.3 Power Supply & Battery	4
2. Menu	4
2.1 Quick Search	5
2.2 Satellite Install	9
2.3 Multimedia	11
2.4 System Setup	13
2.5 Shortcut Buttons	15
4. Chapter III Specifications	18
5. Product Standard Package	21

Product Description

It is a battery powered hand held Satellite alignment meter demodulating DVB-S Signal. It's very convenient for installer to catch quick and accurate Alignment for Antenna to the best position.

It's with microprocessor controller, reliable and stable performance. When it's turned on, channel picture, Signal Strength and Signal Quality will be showed on LCD Screen after you set up your local DVB-S Parameter. Also, it enables you to select big menu window for data figure which is helpful for alignment.

It shows Azimuth and Elevation, CBER/VBER, S/N, Signal Strength and signal lock sound

It detects very faint signal, and supports antenna power OFF/13V/18V selectable.

It's with auto-protection for LNB short-circuit. It includes both AV IN and AV OUT for Camera, LCD...etc

It's used with 12V Power Adaptor when you need to use external power.

It includes high capacity Lithium Battery 8.4V 3000mAh which works for more than 4 hours after it's fully charged.

1.GUIDE

1.1 Face Panel & Button



NO.	Name	Function
1	Signal Input	To connect it with external antenna
2	LCD Screen	To show menu and channel pictures...etc
3	Signal Lock Indicator Light	To lock signal when it lights
4	Charging Indicator Light	The light is on when it's charging; It's off when charging is complete.
5	Power Indicator Light	The light is on when meter is turned on
6	22K Switch Indicator Light	22K Switch is on when it lights
7	13/18V Indicator Light	To show H/V switch output
8	F1 F2 F3 F4	Function Buttons
9	◀▶▶▶OK	Arrow for Cursor Moving OK for Confirmation
10	MENU	To show main menu or return to previous menu
11	EXIT	To cancel selection or exit from current menu
12	0-9 Numerical Button	To input numerical for setting parameters
13	+/- Button	To turn on or off sound indicator for signal strength
14	B.Light	LCD Screen Switch
15	Mute	Sound On/Off Switch
16	TV/Radio	Switch between TV Channel and Radio Channel
17	SCAN	Enter into Quick Search
18	INFO	To show parameter of current channel
19	USB Port	Port for Upgrade or connecting to multimedia
20	Power Connection port	Port for connecting to external power supply
21	Power Switch	Power Switch for machine power
22	AV Output	AV Output
23	AV Input	AV Input

1.2 Power On/Off

To turn on the meter when Power Switch moves to I position.

To turn off the meter when Power Switch moves to 0 position.

Please turn off the meter to charge the meter in time when system information for showing low power popes up.

1.3 Power Supply and Battery

It's used with 12V 1.5A Power Adaptor. It charges through external power when battery is out of power.

It's used with 8.4V 3000 mAH Lithium Battery. It needs 6 hours charging time by connecting power adaptor with external power or car charging. After it's full charge, it works for more than 5 hours (It also depends on the load of external antenna).

Notice: For initial charge, please make battery fully-charged(We suggest it charge for 8 hours).

2.MENU

Press “MENU” key to enter into main menu, and

use Arrow key to move cursor, and then press “OK” key to select sub-menu.



2.1 Quick Search





2.1.1 Satellite Name

To select the satellite name for receiving signal

2.1.2 LNB Type

Select LNB Type

2.1.3 LNB Low Freq/LNB High Freq

Use the numerical button to input Freq Value for Local Freq

2.1.4 Frequency

Use the numerical button to input Freq Value for Down Freq.

2.1.5 Symbol Rate

Use the numerical button to input Value for

SYMBOL RATE

2.1.6 Polarity

Select Polar Mode(OFF/13V/18V)

2.1.7 22K Tone

Select 22K TONE(ON/OFF)

2.1.8 Longitude

Use the numerical button to input Longitude of Satellite

2.1.10 My Longitude

Use the numerical button to input Longitude of Local Region

2.1.11 My Latitude

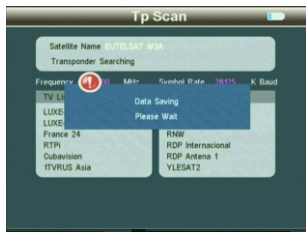
Use the numerical button to input Latitude of Local Region

2.1.12 Set parameters, and press “OK” button to enter the Sub-menu, and then align direction of antenna according to the interface parameters.



2.1.12.1TP Scan

Scan all programs of the current frequency, and automatically store them after scanning, and then return back to the previous menu.



2.1.12.2 Scan All

Scan all programs of all channels, and automatically store them after scanning, and then return back to the previous menu.

2.1.12.3Zoom

Use ◀ ▶ button to select Zoom, and press “OK” button to enter the Sub-menu, and then align the antenna position to reach the best state.



2.2 Satellite Install



2.2.1 Sat Manager

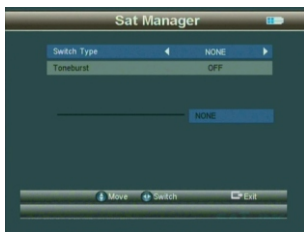
Press “OK” button to enter the Sub-menu, and then set connecting state.

2.2.1.1 Switch Type

Press ◀ ▶ button to select Switch Type(NONE, DisEqC1.0/1.1, DisEqC 1.2/USALS)

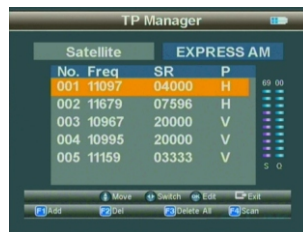
2.2.1.2 Toneburst

Press ◀ ▶ button to select Toneburst mode (OFF/ON).



2.2.2 TP Manager

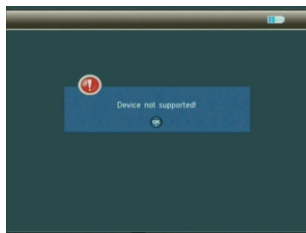
Press “OK” button to enter the Sub-Menu, and then make operations according to its instructions.



2.3 Multimedia

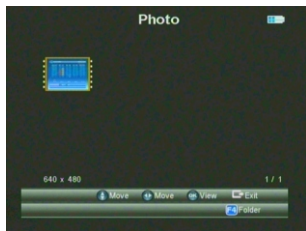


For Multimedia, the external memory should be inserted into USB port. Otherwise, “Device not supported” will pop up on the window.



2.3.1 Photo

Previewing the pictures in JPG format, and make operations according to its instructions.

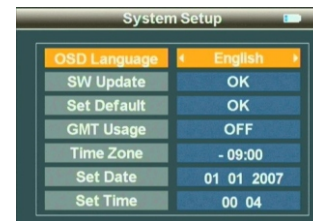


2.3.2 My Music

Play the Music in MP3 format, and then make operations according to its instructions.



2.4 System Setup



2.4.1 OSD Language

Set OSD Language

2.4.2 SW Update

To upgrade SW or Data through USB port.

To store the upgrading file in the external memory, and insert it into USB port, and the enter upgrade menu.

To select the file, it will automatically return back to the previous menu after upgrade.



2.4.3 Set Default

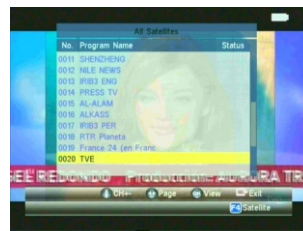
Press "OK" button to set Factory Default.

2.4.4 GMT Usage

Set the GMT parameter

2.5 Shortcut Buttons

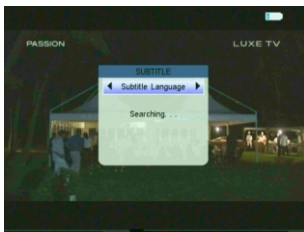
2.5.1 Press "OK" button to enter the Sub-menu when it's playing programs, and make operations according to its instructions.



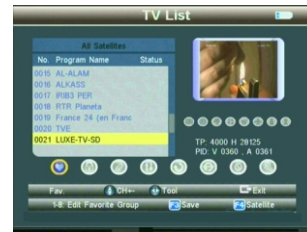
2.5.2 Press "F1" button to enter the Sub-menu when it's playing programs, and make operations according to its instructions.



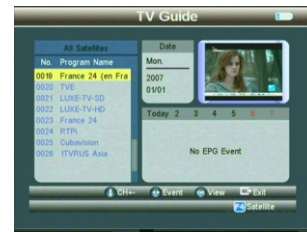
2.5.3 Press “F2” button to enter Sub-menu when it's playing programs, and make operations according to its instructions.



2.5.4 Press “F3” button to enter the Sub-menu when it's playing programs, and make operations according to its instructions.



2.5.5 Press “F4” button to enter the Sub-menu when it's playing programs, and make operations according to its instructions.



Chapter III Specifications

System Capabilities	Fully DVB-S Compliant	Yes	
LNB input	Connector	F type, Female	
	Frequency Range	950MHz-2150MHz	
	Signal Level	-65dBm~-25dBm	
	LNB Power	13/18V,Max350mA	
	LNB Switch Control	22KHz	
Demodulator	DISEqC	Ver 1.0/ 1.2	
	Front end	QPSK	
	Demodulation Range	2Mbps-45Mbps	
System Resources	SCPC and MCPC Capable	Yes	
	Processor	32bit processor (133MHz)	
	FLASH	8Mbyte	
Video Decoder	SDRAM	4*16Mbyte	
	MPEG 2	MP@ML	
	Data Rate	Max15M bits/s	
	Resolution	720*576,720*480	
Audio	Video format	PAL/NTSC/SECAM	
	MPEG	MPEG-1&2	
	Type	Single	
Data Transfer	Sampling Rate	32,44.1 & 48KHz	
	Connector	USB	
Power Supply	LI-ION battery	3000 mAh/8.4V Max	
	Power Adaptor	In	AC 100-220
		Out	DC 12V
Physical characteristics	Size	9.5x15.5x4.5 (cm)	
	Net Weight	0.5KG	

Handling Precautions and Prohibitions of Battery in Sat Meter

Warning:

You are using Lithium ion batteries and Nickel metal hydride batteries in the machine now, so Please don't work under high temperature or high pressure conditions. If the following items happened, abnormal chemical reaction may occur which will lead to the battery overheat, emit smoke, ignite and/or burst.

- (1) incinerate and dispose the battery in fire or heat it;
- (2) pierce the battery with a nail or other sharp objects, strike it with a hammer or step on it;
- (3) immerse the battery with water or connect the positive(+) and negative(-) terminals with a metal objects such as neckles, hair pins, etc.

Notice:

The battery is only applicable to the charger which supplied or appointed by the manufacturer of this machine. The charging time should be minimum 5 hours for the first time, and it should not be charged over 12 hours after the first time.

Please keep your machine off when the battery is charging. The battery should be stored within a temperature range of 0°C to 40°C.

When stored for a long period, charge the battery at least

once per half month so as to prevent over discharge.
The battery is expendable.

Handling:

Improper setting of new battery may lead to the battery burst.

Please use the battery only supplied by the manufacturer,if you want to change a new battery.

Please do not put the battery in fire or dispose it together with garbage.

Please contact the waste administrative institute in your place to get the nearest battery collection station.

5.Product Standard Package



Car charger cable



AV cable



Power



Strap



Carrying case